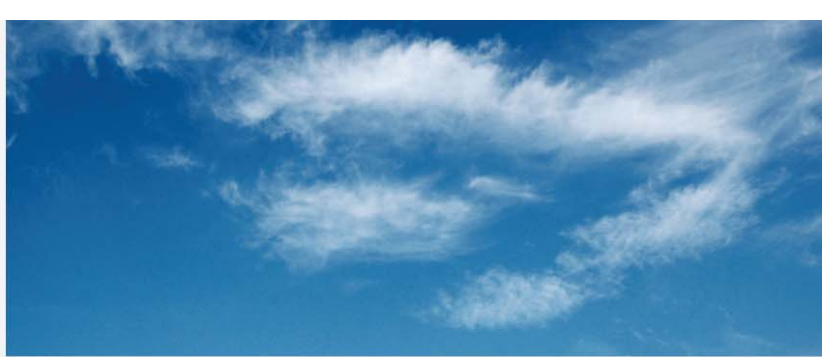




Hardy Filtration

Integrated filtration solutions: air, water & oil



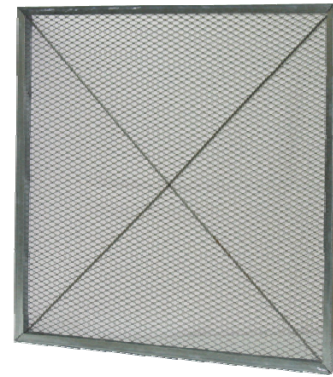
Metal Support Frames

HARDWARE

PAD HOLDING FRAMES

The galvanized pad holding frames are available in a wide range of sizes. These frames support fiberglass or polyester pads. Frames are available with a cross wire or hinged door (optional).

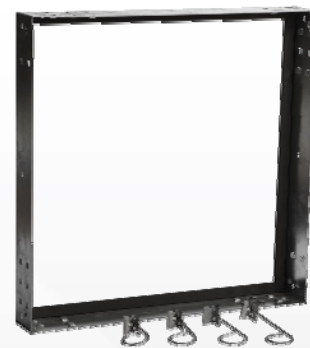
NOMINAL DIMENSIONS	PART NO.	QTY PER BOX
16 X 20 X 1	EM-11620	12
20 X 20 X 1	EM-12020	12
12 X 24 X 1	EM-11224	12
20 X 24 X 1	EM-12024	12
24 X 24 X 1	EM-12424	12
16 X 25 X 1	EM-11625	12
20 X 25 X 1	EM-12025	12
16 X 20 X 2	EM-21620	10
20 X 20 X 2	EM-22020	10
12 X 24 X 2	EM-21224	10
20 X 24 X 2	EM-22024	10
24 X 24 X 2	EM-22424	10
16 X 25 X 2	EM-21625	10
20 X 25 X 2	EM-22025	10



UNIVERSAL HOLDING FRAMES

Universal holding frames of 16 ga. galvanized steel are available in a wide range sizes. These frames can support one or more filter combinations.

DIMENSIONS	PART NO.
12 X 24 X 2.5/8	EU-2412
20 X 24 X 2.5/8	EU-2420
24 X 24 X 2.5/8	EU-2424
16 X 20 X 2.5/8	EU-2016
20 X 20 X 2.5/8	EU-2020
16 X 25 X 2.5/8	EU-2516
20 X 25 X 2.5/8	EU-2520



Clips 1", 2" 3" 4"

CLIPS

The Clips are used to secure the filter or filters in place on the Universal Holding Frame and can be applied to different product combinations.

RC1001 Clip 1"- For a 1 in. filter or filter with header.

RC1002 Clip 2"- For a 2 in. filter

RC1003 Clip 3"- For combination of two filters
2 in. prefilter and final filter with header.

RC1004 Clip 4"- For a 4 in. filter

Side access housings for ASHRAE filters.

Many dimensions are available.

These housings are also available with prefilter of 2" or 4".

Housings are constructed of galvanized steel.



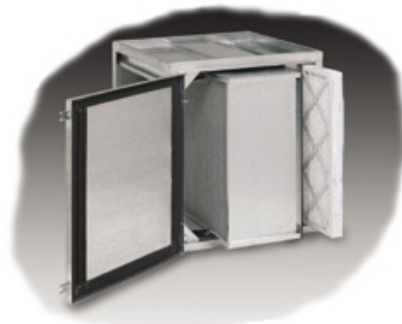
Side access housings for HEPA filters.

Many dimensions are available.

These housings are also available with prefilter of 2" or 4".

Housings are constructed of galvanized steel and are also available in stainless steel.

Filters are sealed on the frame with a crank system.



Heavy duty frames for HEPA filters.

Many dimensions are available.

These frames are constructed of galvanized steel and are also available in stainless steel.

Filters are sealed on frame with four bolts.



Bag-In-Bag-Out housings for HEPA filters.

These housings are also available with prefilter of 2", 4" or 6".

Housings are constructed of galvanized steel and are also available in stainless steel.

Filters are sealed on place with "Gel-Seal" system.

These housings are used to treat laboratory contaminated air before being exhausted.

